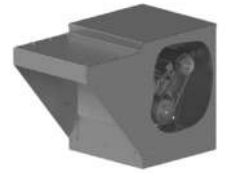


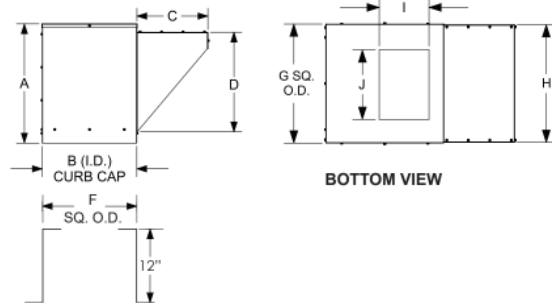
MODEL KSFV

BELT DRIVE CENTRIFUGAL KITCHEN SUPPLY FAN



APPLICATION

Models KSFV fans are primarily used for filtered make-up air in kitchen hood applications but may also be specified for make-up air in commercial and industrial applications such as manufacturing and assembly areas.



S&P USA Ventilation Systems, LLC., Div. of Soler & Palau Ventilation Group, certifies that the Models KSFV shown herein are licensed to bear the AMCA Seal. The ratings shown are based on test and procedures performed in accordance with AMCA Publication 211 and AMCA Publication 311 and comply with the requirement of the AMCA Certified Ratings Program.



LISTED POWER
ROOF VENTILATOR
UL STANDARD 705

DIMENSIONAL DATA

SIZE	A	B	C	D	F	G	H	I	J	DAMPER O.D.	FILTERS (QTY)	AVG SHIP WT
9	30	23-7/8	18	25-1/8	22-1/2	24	24	10-3/8	12	18-1/2	20 X 20 (1)	152
10	35	33-7/8	18	30-1/8	32-1/2	34	34	11-5/8	13-1/4	28-1/2	16 X 25 (2)	217
12	35	33-7/8	18	30-1/8	32-1/2	34	34	13-5/8	15-3/4	28-1/2	16 X 25 (2)	235
15	35	33-7/8	18	30-1/8	32-1/2	34	34	16-1/8	18-7/8	28-1/2	16 X 25 (2)	282
18	43-1/8	41-7/8	18	30-1/8	40-1/2	42	42	19-1/8	22-1/8	36-1/2	20 X 25 (2)	331

ACCESSORIES

Size	RECOMMENDED 12" HIGH MOUNTING CURB		RECOMMENDED GRAVITY DAMPER		DAMPER MOTOR (LOOSE)
	OD	STOCK NO.	OD	STOCK NO.	STOCK NO.
9	22-1/2	711222 ●	16	S3GA16CB ●	MP2781 ●
10	32-1/2	711232 ●	20	S3GA26CB ●	MP2781 ●
12	32-1/2	711232 ●	24	S3GA26CB ●	MP2781 ●
15	32-1/2	711232 ●	24	S3GA26CB ●	MP2781 ●
18	40-1/2	711240 ●	27	S3GA34CB ●	MP2781 ●

MODEL KSFV Belt-Drive Centrifugal Kitchen Supply Fan

Model KSFV	Motor HP	Max. BHP	STOCK NO.	STOCK NO.	CFM	Outlet Velocity	Sones @ 1/4 SP	RPM at Static Pressure										
			Single Phase 115	Three Phase 208/230/460				1/8	1/4	3/8	1/2	5/8	3/4	1	1-1/4	1-1/2	2	
15	3/4	0.86	KSFV15RLL1S ● (375-500) KSFV15RHL1S ● (501-625)	KSFV15RL3S ● (375-500) KSFV15RH3S ● (501-625)	3130	1519	17.1	448	500	549	593	636	680	-	-	-	-	
					3345	1624	18.7	473	520	568	612	651	691	-	-	-	-	
					3560	1728	20.4	497	541	587	630	668	705	782	-	-	-	
	1	1.15	KSFV15SL1S ● (425-550) KSFV15SM1S ● (551-650) KSFV15SH1S ● (651-700)	KSFV15SL3S ● (425-550) KSFV15SM3S ● (551-650) KSFV15SH3S ● (651-700)	3775	1833	22.3	522	563	607	648	687	722	793	-	-	-	-
					3990	1937	24.2	547	586	627	667	705	740	806	875	-	-	
	1-1/2	1.73	KSFV15TL1S ● (561-700) KSFV15TH1S ● (701-800)	KSFV15TL3S ● (561-700) KSFV15TH3S ● (701-800)	4205	2041	26.2	572	610	647	687	723	758	822	886	-	-	-
					4420	2146	28.0	598	633	669	706	742	776	839	-	-	-	
	2	2.30	KSFV15TL1S ● (561-700) KSFV15TH1S ● (701-800)	KSFV15TL3S ● (561-700) KSFV15TH3S ● (701-800)	4635	2250	29.9	623	658	691	726	762	795	-	-	-	-	-
					4850	2354	31.9	649	682	714	747	781	-	-	-	-	-	
					5065	2459	34.0	675	707	737	-	-	-	-	-	-	-	
	18	3/4	0.86	KSFV18RH1S ●	KSFV18RH3S ●	3650	1772	17.3	373	421	456	495	534	571	-	-	-	-
						3940	1913	19.1	395	440	477	510	547	583	649	-	-	-
1		1.15	KSFV18SL1S ● (401-500) KSFV18SH1S ● (501-550)	KSFV18SL3S ● (401-500) KSFV18SH3S ● (501-550)	4230	2053	20.8	419	459	498	528	560	595	660	721	-	-	
					4520	2194	22.6	443	479	518	549	576	608	672	730	-	-	
1-1/2		1.73	KSFV18TL1S ● (476-550) KSFV18TH1S ● (551-625)	KSFV18TL3S ● (476-550) KSFV18TH3S ● (551-625)	4810	2335	24.7	467	501	538	570	596	623	684	741	795	-	
					5100	2476	26.7	492	522	557	591	617	641	697	753	805	-	
2		2.30	KSFV18VL1S ● (450-550) KSFV18VM1S ● (551-625) KSFV18VH1S ● (626-725)	KSFV18VL3S ● (450-550) KSFV18VM3S ● (551-625) KSFV18VH3S ● (626-725)	5390	2617	29.1	516	545	577	610	638	662	711	766	817	-	
					5680	2757	31.5	541	568	598	629	659	683	727	778	-	-	
3		3.45	N/A	KSFV18WL3S ● (500-600) KSFV18WM3S ● (601-675) KSFV18WH3S ● (676-800)	5970	2898	33.9	566	591	619	649	678	704	746	-	-	-	
					6260	3039	36.7	591	615	641	669	698	724	-	-	-		
					6550	3180	39.7	616	640	663	689	-	-	-	-	-		

Power ratings (BHP) do not include transmission losses.
 Performance certified is for installation type B-free inlet, ducted outlet.
 Performance ratings do not include the effects of appurtenances (accessories).

Table shows fan RPM needed for required CFM and SP.
 Shaded/Non-shaded area shows motor HP and stock number to order.