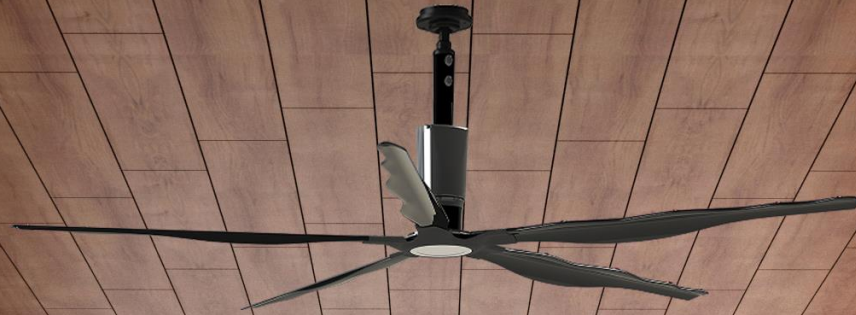


# The Jazz Fan





## Jazz Overview

- Maximum 10' in diameter
- Six Standard Colors (with multitude of other options)
- Gearless Whisper Quiet Motor
- Integrated Dimmable LED Light
- 45,000 CFM of Air Movement



## Jazz Applications

- Automotive Garages
- Fitness Facilities
- Residential Spaces
- Tourist Destinations
- Public Congregation Areas
- Retail Environments
- Schools
- Recreational Centers
- And many more...



## Differentiators

- Airfoil Design
- Gearless Mover
- On-Board Controls
- Integrated Dimmable LED Light
- Universal Mounting System

## Airfoil Design

### *Minimal Noise*

Using varying points on the leading edge spreads the noise/acoustic signature over greater frequencies

### *Evenly Dispersed Air*

The varying degree angle of attack considers rotational speeds, eliminating pockets of minimal air movement.

### *Maximum Efficiency*

Ranging from 6° to 14° at its greatest point diminishes the resistance against each blade.

### *Industrial Strength*

Zinc coated steel mounting plate is formed and surrounded by injection mold fibre filled polypropylene.

### *Visually Appealing*

The sleek, ultra-modern design is available in six standard colors and a magnitude of customizable finishes

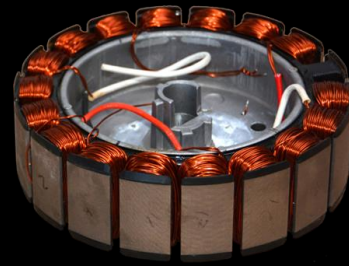




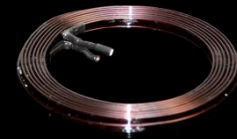
## Gearless Mover

We've eliminated mechanical components that drastically reduce the sound signature created by other HVLS Fans. In doing so, the Jazz Fan motor leaves only the sound of the breeze itself aural.

*Typical DC Motor*



*Jazz Fan DC Motor*



Unlike typical gearless motors, the Jazz Fan motor utilizes a simple ring of coil, with ultra-low resistance.

### *Industrial Strength*

- Motor Assembly is less than 15lbs
- 60 Poles
- 52lbf of continuous torque
- Zero backlash
- Patented and proven technology
- Smart Voltage (capable 104-277V, 50/60Hz)
- 92% Efficient



## LED Light

- Dimmable from 0 to 1980 lumens
- Seamless Integrated
- Eliminates 'Strobing'
- Separately Controlled
- 20 Levels of Brightness





## On-Board Controls

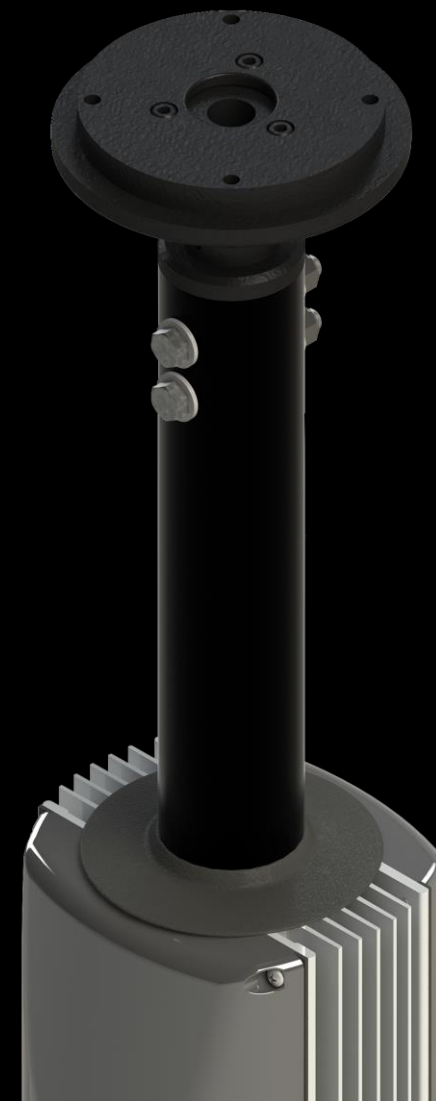
- Automatically detects input power
- Constantly measures fan loads
- Makes real-time energy efficient adjustments
- Factory connected
- Hassle-free installation
- Building Automation and Fire Suppression signals
- Invisible to untrained eye
- Cat5 control cable





## Universal Mounting System

- 360° Swivel
- Ceilings with 0 to 18.5° slope
- Hardware included (with every fan) for;
  - I-Beam, Open Steel Web Joists, Wooden Structures, Purlins
- Acts as housing for wiring
- Removes need for 'guy wires'
- Improves installation times





# Standard Colors



**Alabaster**



**Sterling**



**Slate**



**Onyx**

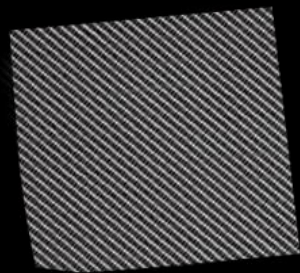


**Radiance**

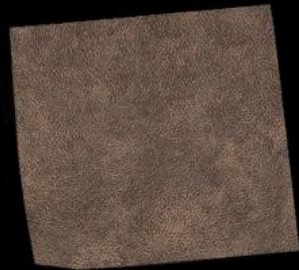


**Cobalt**

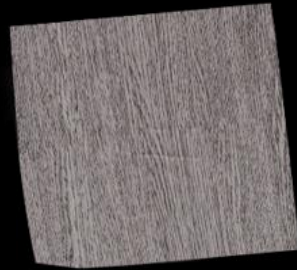
# Textured Finishes



**Carbon Fibre**



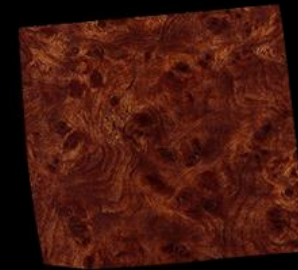
**Leather**



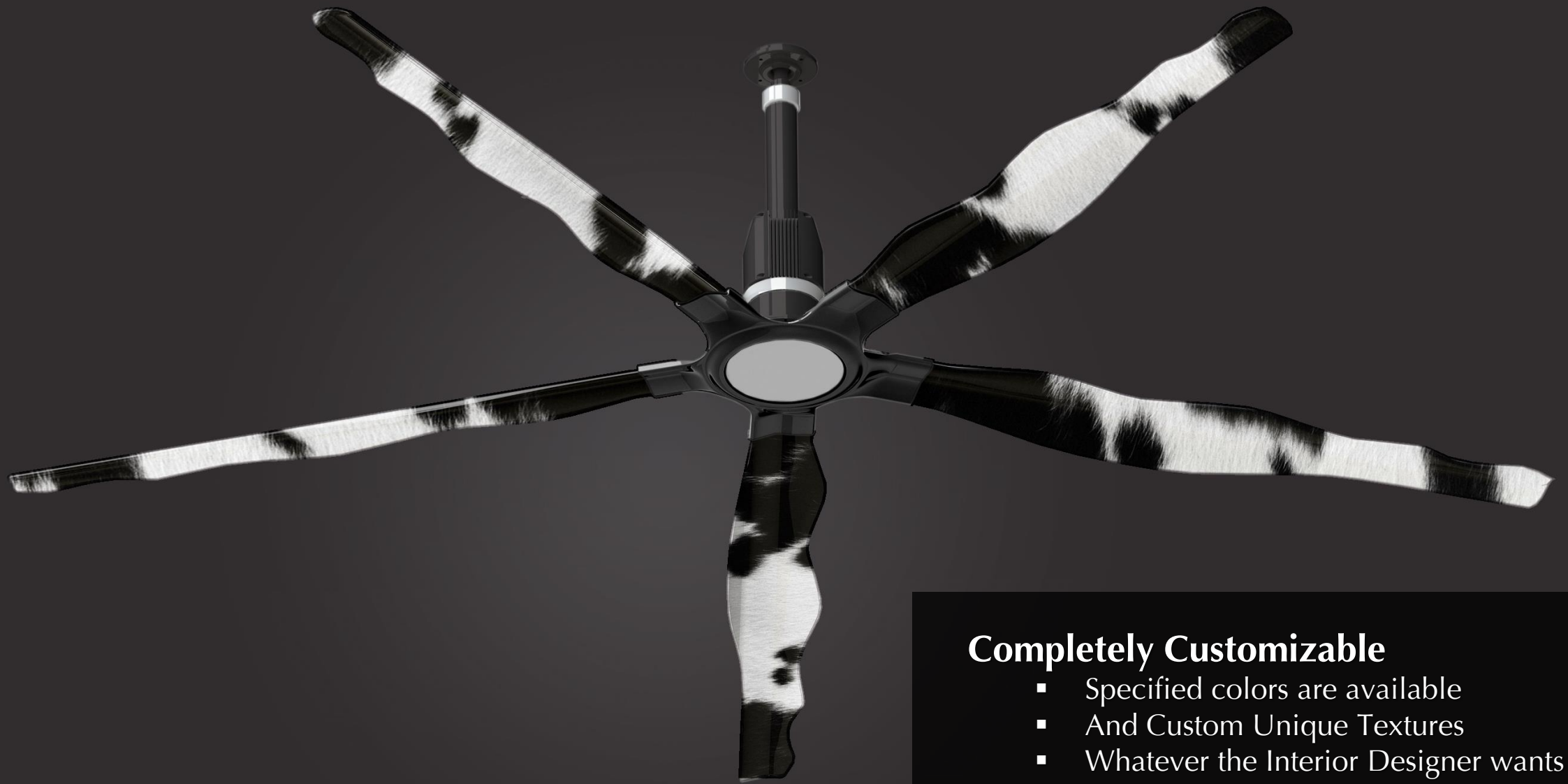
**Barn Board**



**Mahogany**



**Burlwood**



### **Completely Customizable**

- Specified colors are available
- And Custom Unique Textures
- Whatever the Interior Designer wants

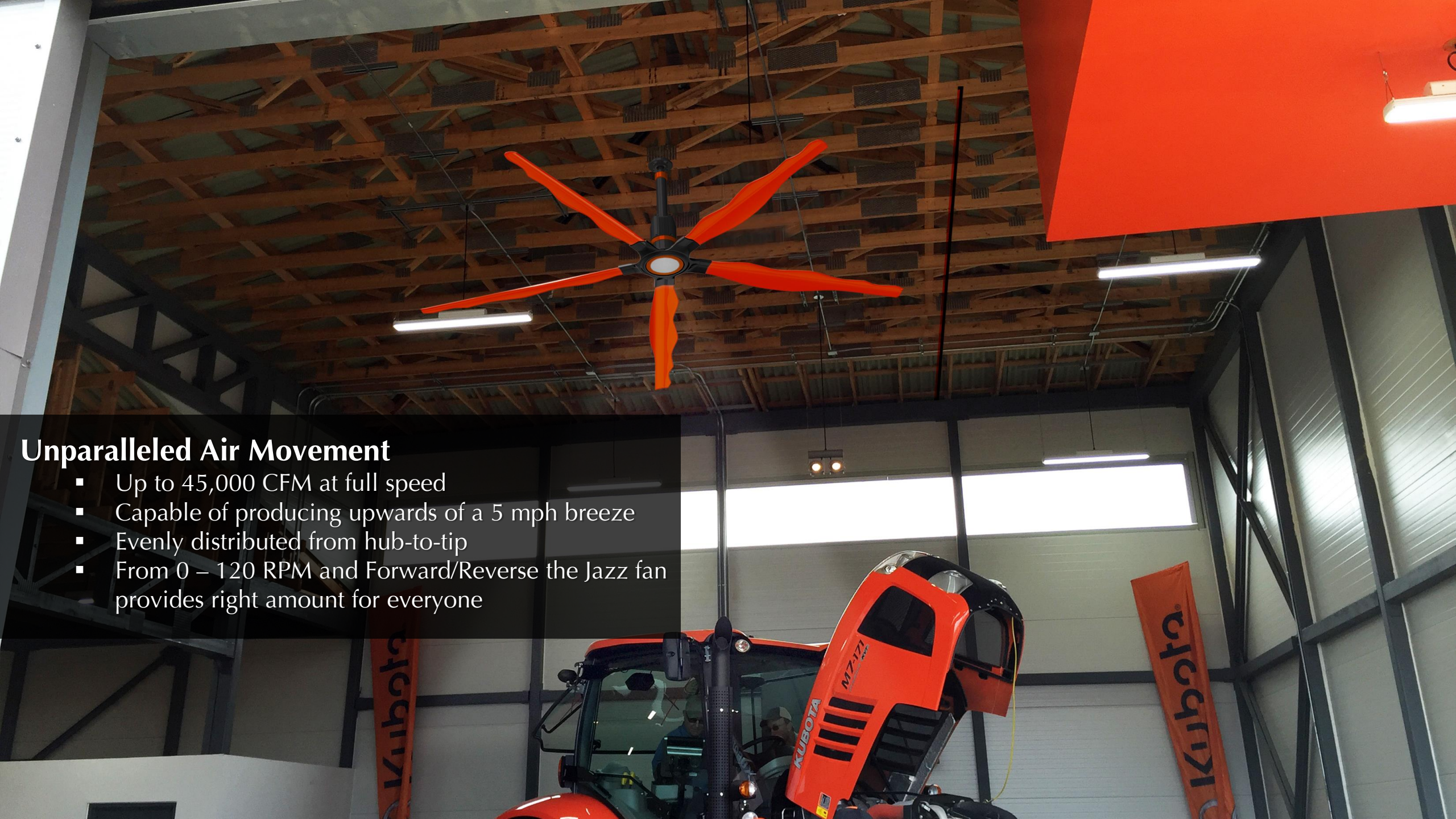
A modern interior space featuring a ceiling fan with a sleek, dark finish. The room has large windows with white curtains and a glass railing overlooking a lower level. The ceiling is made of exposed concrete. In the foreground, a control panel for the fan is visible, displaying 'Jazz FANS' and 'FAN On 0%'.

## Simplistic Control

Provides Intuitive Commands of

- On/Off
- Forward/Reverse
- Speed Up/Slow Down
- Brightness Levels





## Unparalleled Air Movement

- Up to 45,000 CFM at full speed
- Capable of producing upwards of a 5 mph breeze
- Evenly distributed from hub-to-tip
- From 0 – 120 RPM and Forward/Reverse the Jazz fan provides right amount for everyone



wrxshop



## Crazy Efficient

- At Full Speed and Brightness on 120v electrical systems the entire unit draws 2.2amps or...

# 264W





### **Tested and Certified**

- TUV Tested to UL 507 and CSA 22.2 standards
- CE certified for use in Europe





## Tidy, Compact Packaging

- One fan, in one box
- 63" x 25" x 14" H
- Designed to withstand couriers
- Less than 125lbs total
- Minimal freight costs

