

# MODEL SDBD DOWNBLAST DIRECT DRIVE CENTRIFUGAL ROOF EXHAUSTER

## APPLICATION

Model SDBD direct drive units are used to exhaust air from all types of commercial and institutional buildings such as hospitals and health care facilities, schools, recreational buildings, machinery and equipment rooms, offices, retail stores and similar applications.

The nonoverloading wheel with its higher static pressure capability makes this unit suitable for either ducted or nonducted applications. It's roof mounting permits location near the area to be ventilated, allowing short duct runs and more efficient operation.

The spun aluminum exterior provides an attractive appearance and is compatible with belt driven Model SDB and companion gravity units to make up a complete ventilation system. Direct drive units use smaller diameter wheels, resulting in low sound levels and quiet operation. They have no belts or fan bearings to maintain or adjust and consequently require very little maintenance.

## CONSTRUCTION

### Housing

- Curb cap has prepunched mounting holes for ease of installation.
- Fan plate isolates motor compartment from contaminated exhaust air.
- Spun aluminum hood and skirt for weather protection and attractive appearance.
- Heavy-gauge motor support for rigidity and strength
- Neoprene isolators for reduction of vibration and sound.
- Quick access to motor compartment for ease of maintenance.
- Conduit passage for easy electrical connection from below roof.
- Aluminum birdscreen and disconnect are included on standard models.

### Centrifugal Wheel

- Non overloading for safe operation in ducted systems.
- Backward inclined wheels constructed of noncorrosive aluminum.
- Statically and dynamically balanced for smooth operation.

### Speed Controllable Motors

- Standard motors are single speed, speed controllable and drip-proof.
- All motors are rated for continuous duty.
- Disconnect is standard with single speed drip-proof motors.
- Motors ship mounted as standard.

## DIMENSIONAL DATA

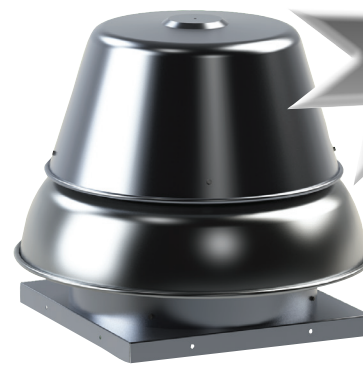
MODEL SDBD	A	B	C	D	ROOF OPENING	Average Ship Wt. Lbs.
6	18 1/8	14 1/8	22 3/8	1 1/2	13 1/2	50
7	18 1/8	20 1/2	22 3/8	4 1/8	13 1/2	55
8	18 1/8	20 1/2	22 3/8	4 1/8	13 1/2	55
10	18 1/8	20 1/2	22 3/8	4 1/8	13 1/2	55
12	20 1/8	27 3/8	27 5/8	4	15 1/2	70
14	20 1/8	27 3/8	27 5/8	4	15 1/2	70
15	24 1/8	28	33	4	19 1/2	80
16	24 1/8	28	33	4	19 1/2	80

## ACCESSORIES

MODEL SDBD	RECOMMENDED 12" HIGH MOUNTING CURB		RECOMMENDED GRAVITY DAMPER		DAMPER MOTOR (LOOSE)	115 VOLT SPEED CONTROL		230 VOLT SPEED CONTROL
	OD	STOCK NO.	OD	STOCK NO.	STOCK NO.	STOCK NO.	STOCK NO.	STOCK NO.
6	16 1/2	711216 ●	12	411012 ●	411611 ●	2727.1 ●	N/A	3232.1 ♦
7	16 1/2	711216 ●	12	411012 ●	411611 ●	2727.1 ●	N/A	3232.1 ♦
8	16 1/2	711216 ●	12	411012 ●	411611 ●	2727.1 ●	N/A	3232.1 ♦
10	16 1/2	711216 ●	12	411012 ●	411611 ●	2727.1 ●	2828.1 ●	3232.1 ♦
12	18 1/2	711218 ●	14	411014 ●	411611 ●	2727.1 ●	2828.1 ●	3232.1 ♦
14	18 1/2	711218 ●	14	411014 ●	411611 ●	2727.1 ●	N/A	3232.1 ♦
15	22 1/2	711222 ●	18	411018 ●	411611 ●	N/A	2828.1 ●	3232.1 ♦
16	22 1/2	711222 ●	18	411018 ●	411611 ●	N/A	2828.1 ●	3232.1 ♦

ALL DIMENSIONS IN INCHES, WEIGHTS IN POUNDS. OD IS OUTSIDE DIMENSION OF SQUARE CURB AND DAMPER. DUE TO CONTINUING RESEARCH, S&P RESERVES THE RIGHT TO CHANGE SPECIFICATIONS WITHOUT NOTICE.

Please refer to the General Catalog or contact the Factory for our Full Line of products available on standard shipping schedules.



## AMCA SEAL



S&P USA Ventilation Systems, LLC., Div. of Soler & Palau Ventilation Group, certifies that the Models SDBD shown herein are licensed to bear the AMCA Seal. The ratings shown are based on test and procedures performed in accordance with AMCA Publication 211 and AMCA Publication 311 and comply with the requirement of the AMCA Certified Ratings Program.



LISTED POWER  
ROOF VENTILATOR  
UL STANDARD 705

## SPEED CONTROL

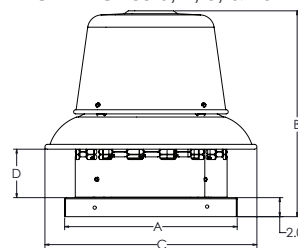
### Solid State Speed Control:

Control is matched to the motor and blower wheel to allow continuous reduction in performance allowing adjustments of airflow for system balancing. CFM is reduced in direct proportion to motor speed reduction. Speed control is only available for single phase. Exhauster performance can be controlled from the ventilated area.

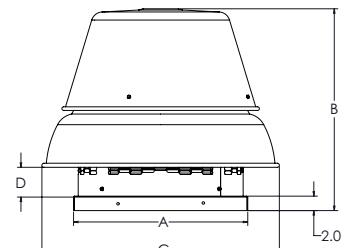
**2727.1 MAX 1/3 HP-5 AMP 120V**

**2828.1 MAX 1/2 HP-10 AMP 120V**

SDBD Sizes 6, 7, 8, & 10



SDBD Sizes 12, 14, 15, & 16



### Ship Schedules:

- Next Day Shipment From Stock
- ▲ 3 Day Shipment From Stock
- ♦ 10 Day Shipment

CENTRIFUGAL ROOF & WALL EXHAUSTERS

<b>MODEL SDBD</b>					<b>Downblast Direct Drive Centrifugal Roof Exhauster</b>										Ventilator with Open Drip-proof Motor		
Model SDBD	Motor Hp	Max. BHp	RPM	Sones @ 1/8 SP	CFM at Static Pressure										115/1/60	208-230/1/60	
					0	1/8	1/4	3/8	1/2	5/8	3/4	7/8	1	1-1/4	Stock No.	Stock No.	
6C	1/10	.07	1650	7.0	182	153	131	107	71							SDBD06CJH1AS ●	SDBD06CJH1CS ◆
6	1/10	.05	1650	6.5	351	300	245	190	114							SDBD06JH1AS ●	SDBD06JH1CS ◆
7	1/10	.09	1650	7.2	476	429	380	329	266	199	94					SDBD07JH1AS ●	SDBD07JH1CS ◆
8	1/25	.03	1150	6.5	592	514	421	206								SDBD08HM1AS ●	-
	1/4	.12	1750	11.3	892	842	789	738	667	595	505	297				SDBD08MH1AS ●	SDBD08MH1CS ◆
10	1/4	.09	1150	7.6	949	847	738	607	419							SDBD10MM1AS ●	SDBD10MM1CS ◆
	1/3	.24	1700	12.6	1348	1282	1214	1137	1060	977	886	783	653			SDBD10PH1AS ●	SDBD10PH1CS ◆
12	1/4	.16	1150	8.5	1281	1176	1050	909	719	312						SDBD12MM1AS ●	SDBD12MM1CS ◆
	1/2	.41	1700	15.4	1902	1486	1565	1674	1592	1500	1401	1292	1173	811		SDBD12QH1AS ●	SDBD12QH1CS ◆
14	1/4	.26	1100	12.3	2196	2047	1864	1673	1428	1115						SDBD14MM1AS ●	SDBD14MM1CS ◆
15	1/2	.39	1150	14.8	2685	2565	2440	2289	2109	1913	1690	1260				SDBD15QM1AS ●	SDBD15QM1CS ◆
16	1/2	.49	1150	17.3	3298	3150	3002	2835	2663	2468	2234	1975				SDBD16QM1AS ●	SDBD16QM1CS ◆

Speed (RPM) shown is nominal. Performance is based on actual speed of test.  
 Performance certified is for installation type A-free inlet, free outlet.  
 Performance ratings include the effects of birdscreen in the airstream.

The sound ratings shown are the loudness values in the fan sones @ 5' (1.5m) in an hemispherical free field calculated per AMCA Standard 301.  
 Installation Type A: free inlet hemispherical sone levels.