



Pedestal Fans & Oscillating Pedestal Fans

Assembly/Operating Instructions

READ AND SAVE THESE INSTRUCTIONS

Models: CA20ADJ/OSC
CA24ADJ/OSC
CA30ADJ/OSC



WARRANTY

CANARM Ltd. warrants every new fan to be free of defects in material and workmanship, to the extent that, within a period of one year from the date of purchase CANARM Ltd. shall either repair or replace at CANARM's option, any unit or part thereof, returned freight prepaid, and found to be defective.

This warranty does not include any labour or transportation costs incidental to the removal and reinstallation of the unit at the user's premises.

Components repaired or replaced are warranted through the remainder of the original warranty period only.

This warranty applies to the original purchaser-user only; it is null and void in case of alteration, accident, abuse, neglect, and operation not in accordance with instructions.

NOTICE: No warranty claims will be honored by CANARM Ltd. unless prior authorization is obtained.

Installation or Product problems? Do not return to store of purchase.
Contact Canarm Service at 1-800-265-1833 (CANADA) 1-800-267-4427 (U.S.A.)
1-800-567-2513 (EN FRANCAIS) Monday to Friday 8:00 - 5:00pm e.s.t.



Assembly/Operating Instructions - Pedestal Fans & Oscillating Pedestal Fans

Read the instructions completely and check the contents of the carton before starting assembly.

Item	Qty	Description
1	1	3 speed, 1/4 HP motor with 12ft cord.
Motor hardware package: (packed with motor)		
2	1	1/2" - 13 x 1" hex head bolt
3	1	1/2" - 13 hex nut
4	1	1/2" lock washer
5	1	1/4" - 20 x 1" hex head bolt
6	1	1/4" - 20 hex nut
7	1	1/4" flat washer
8	1	1/4" lock washer
9	8	motor flat washers
10	4	#10 - 32 motor hex nut

Item	Qty	Description
11	4	#10 motor lock washers
12	1	29" diameter base
13a	1	front guard
13b	1	back guard
14	1	fan blade
15	1	pole assembly
Pole hardware package: (taped to pole)		
16	1	hex wrench
17	4 or 5	5/16" - 18 x 1/2" carriage bolt
18	4 or 5	5/16" - 18 hex nuts
19	4 or 5	5/16" lock washers

NOTE: The base and pole will have either 4 or 5 assembly holes. Be sure they match and the hardware corresponds.

NOTE: If oscillating model, some assembly is required on motor. Follow directions on instruction sheet included in motor box.

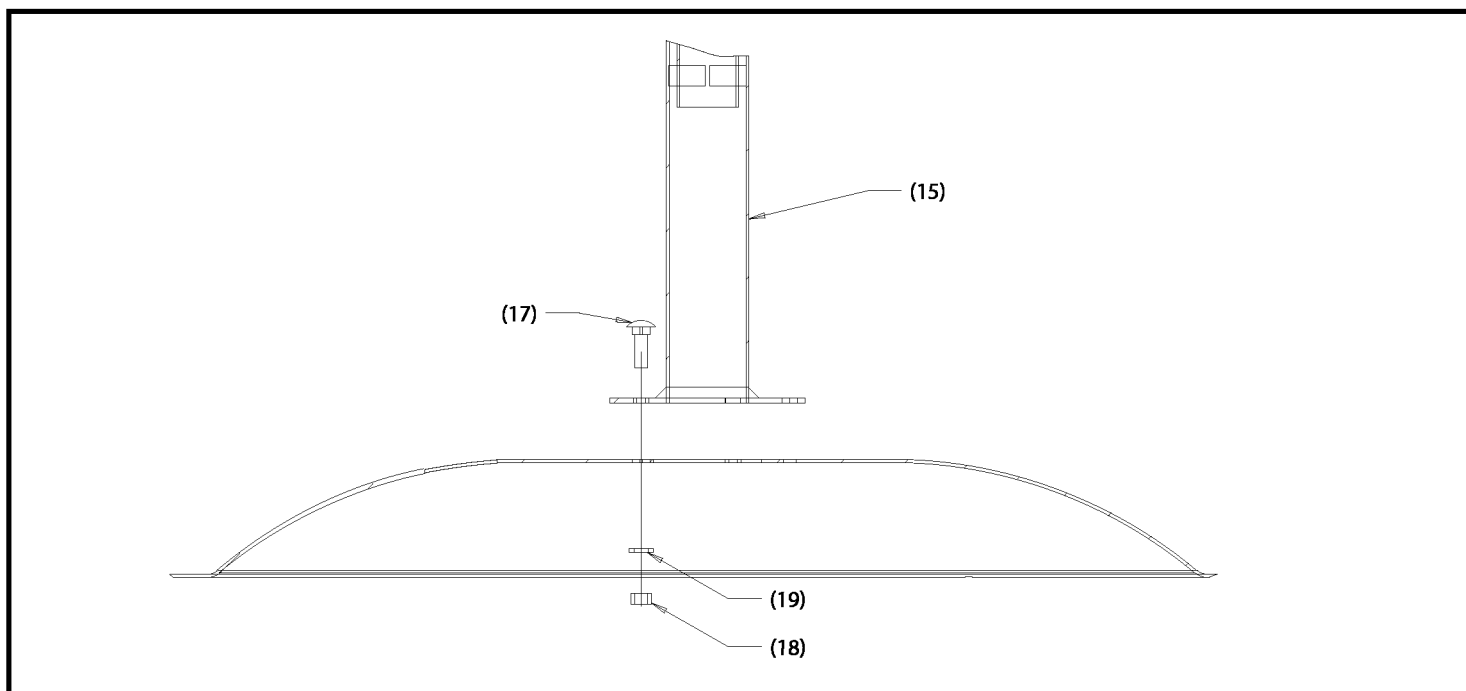
Tools required:

- 2 adjustable wrenches
- 1 flat screw driver
- 1 hex wrench - supplied with pole hardware

Assembly:

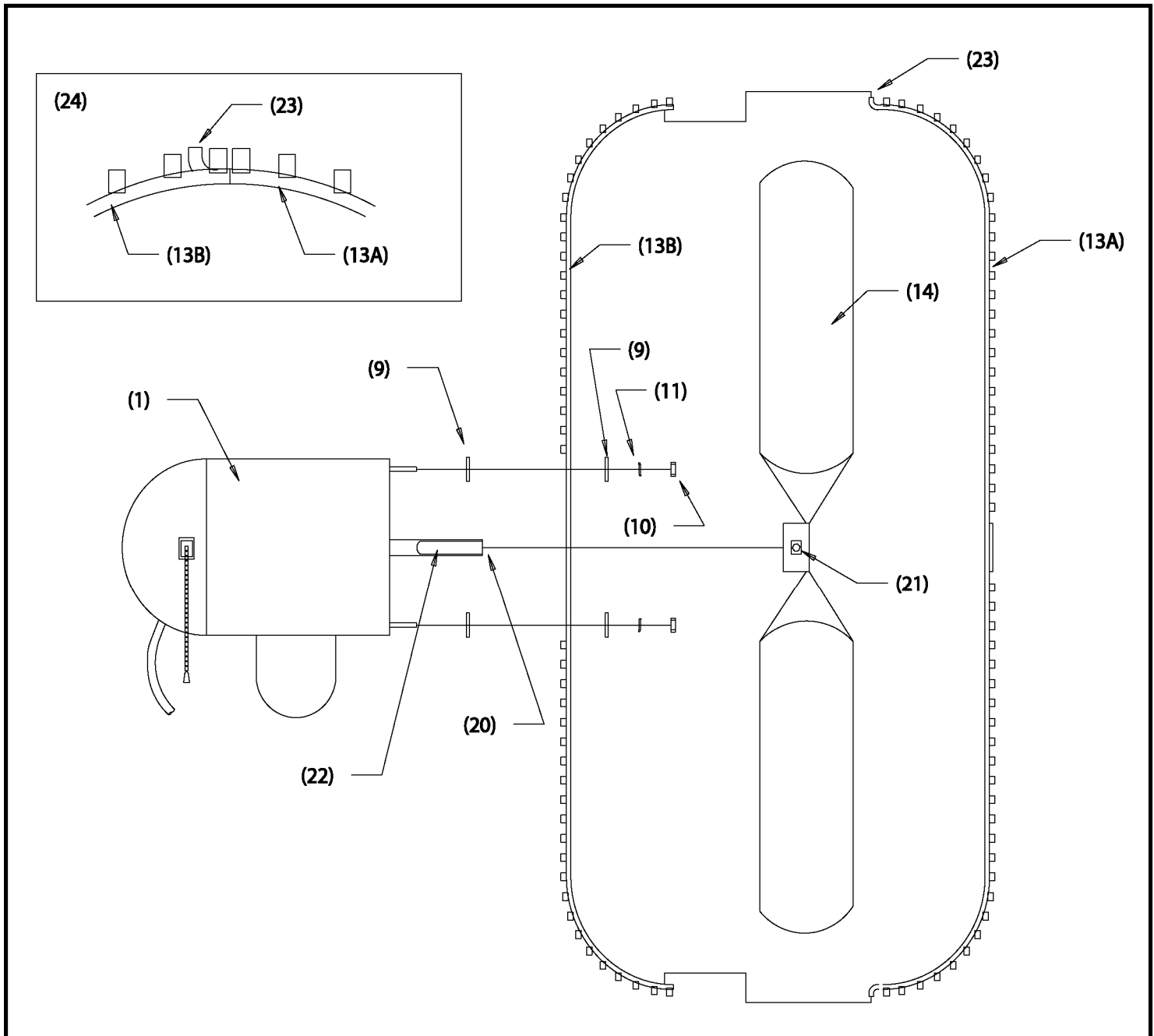
1. Assemble the base and pole:

The pole comes preassembled in its lowest position. Mate the pole assembly (15) to the base (12) and assemble with hardware (17), (18), (19); tighten securely.



2. Assemble the motor blade and guard:

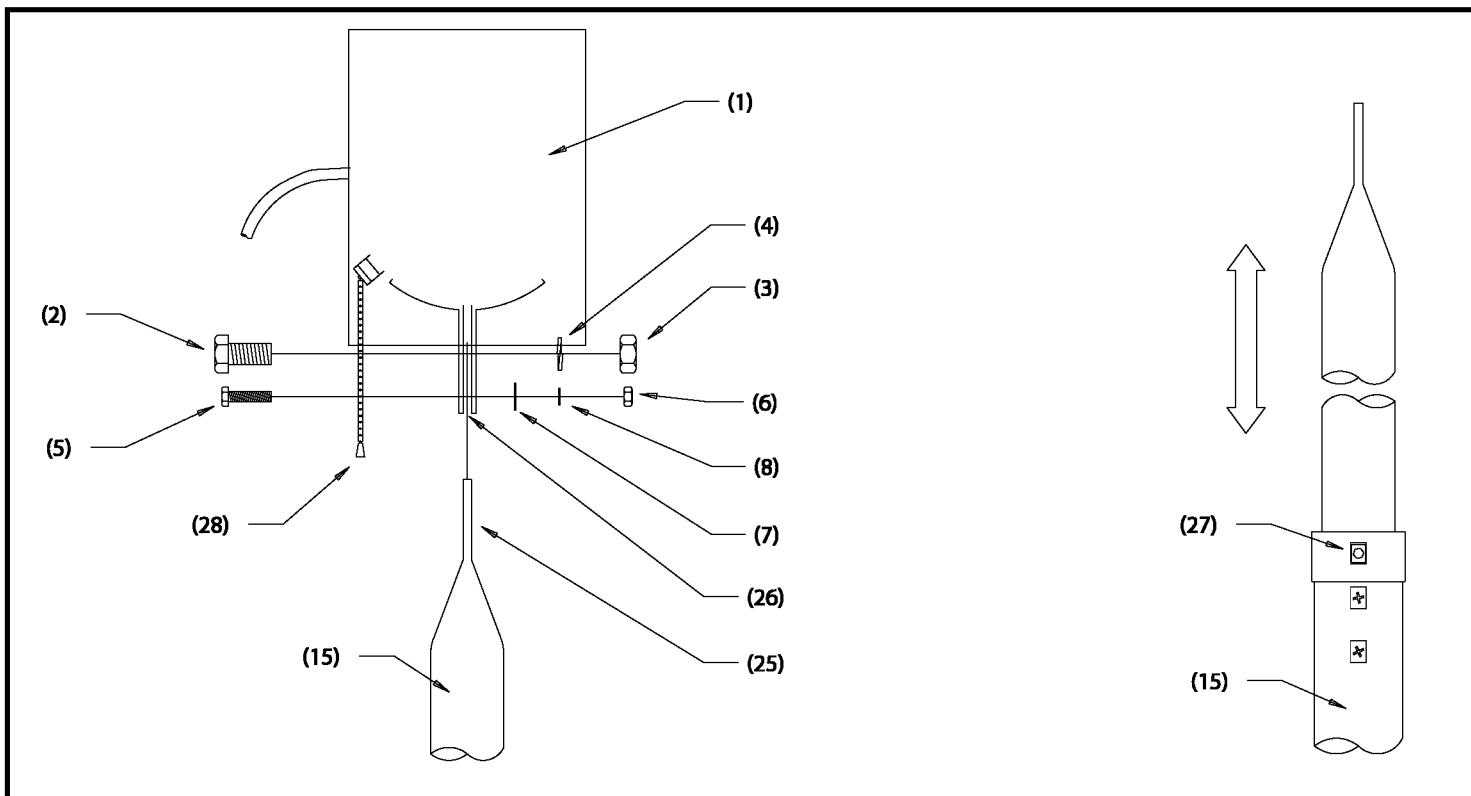
The back guard (13.B) is secured to the motor (1) with hardware (9) (10) (11). The blade (14) slides on the motor shaft until flush with the shaft end (20). Use the hex wrench (16) to tighten the set screw (21). Be sure the set screw sits directly onto the flat on the motor shaft (22) when tightened. Snap the front guard to the back guard by inserting 2 of the guard tabs (23) into the back guard and then use a flat screw driver to pry the other 2 tabs into place. See detail drawing (24).



3. Assemble motor to pole:

CAUTION: Be sure the pole position is locked or at its lowest position to prevent accidental shifting while assembling. Have one person hold the head assembly while another secures the hardware.

Slide the flat end of the pole (25) in between the brackets on the motor (26) and align the holes. Assemble the connector hardware (2)(3)(4) and tighten. Assemble the adjustment locking hardware (5)(6)(7)(8) in the lower hole, tilt to the desired angle and tighten hardware. Assembly is complete.



Adjusting Fan Height:

CAUTION: Have a second person hold the fan head while adjusting the height to prevent accidental shifting.

Loosen the locking screw on the collar (27) using the hex wrench (16) provided. Adjust the height and re-tighten the locking screw.

Operating The Fan:

CAUTION: Never operate the fan without guards securely in position.

Plug the fan into a convenient grounded 120 volt outlet. Change speeds by pulling down on the motor switch chain (28) and releasing. The speeds change from "low", to "medium" to "high", then "off" with each pull.

Maintenance:

CAUTION: The motor has an auto resetting overheat device, therefore the motor could restart unexpectedly. **ALWAYS** disconnect the fan from the power supply before cleaning or servicing.

Keep the motor, blade and guard free from dirt build up to maximize air flow and prevent premature motor failure.

Installation or Product problems? Do not return to store of purchase.
Contact Canarm Service at 1-800-265-1833 (CANADA) 1-800-267-4427 (U.S.A.)
 1-800-567-2513 (EN FRANCAIS) Monday to Friday 8:00 - 5:00pm e.s.t.



CANARM LTD.
 2157 PARKEDALE AVENUE
 BROCKVILLE, ONTARIO K6V 5V6
 TELEPHONE: (613) 342-5424
 FAX: 1-800-263-4598
 E-MAIL: agsales@canarm.ca

CANARM LTEE.
 8500 RUE GRENACHE
 ANJOU, QUEBEC H1J 2B1
 TELEPHONE: (514) 353-2255
 FAX: (514) 353-2522
 E-MAIL: agsales@canarm.ca